

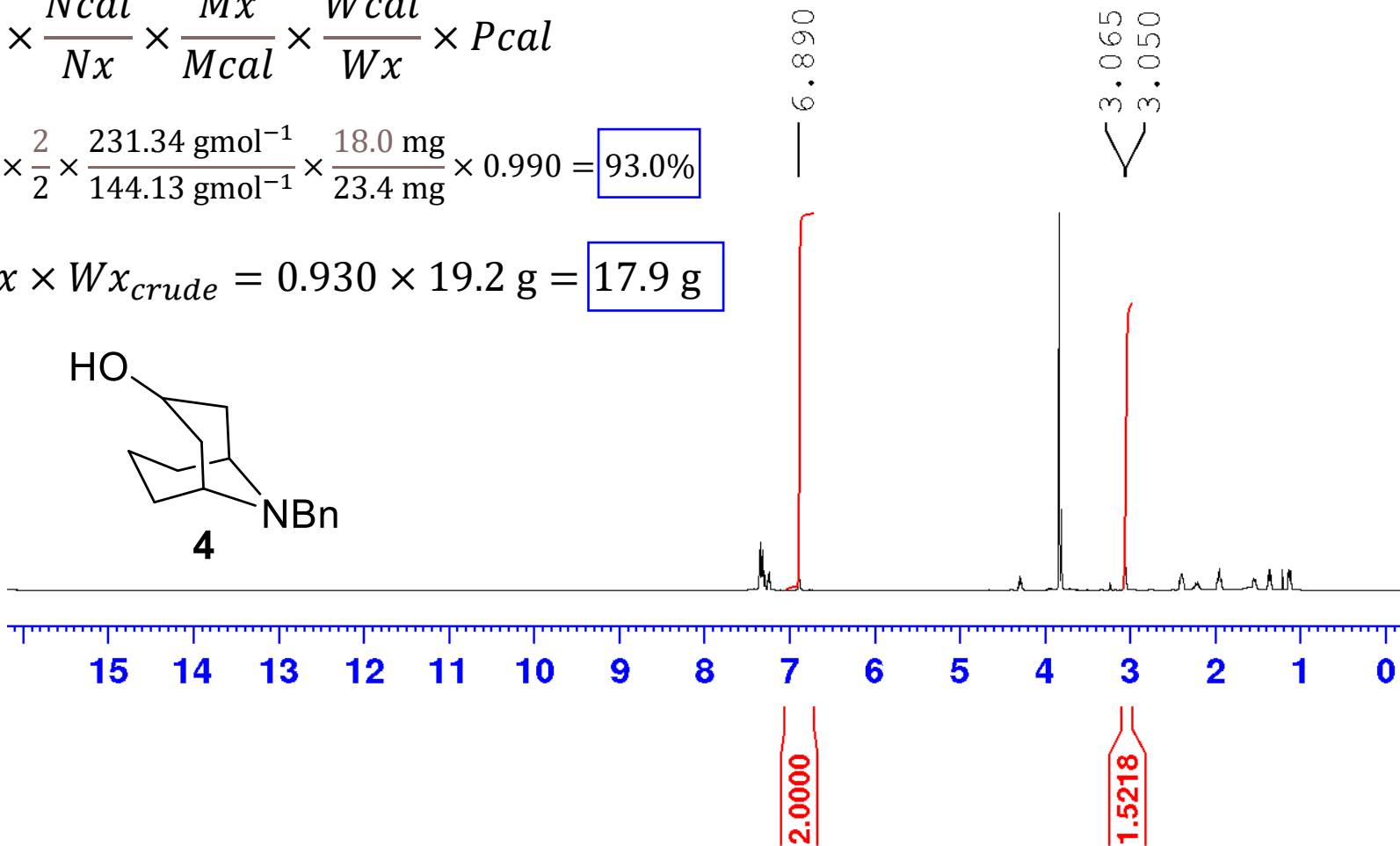
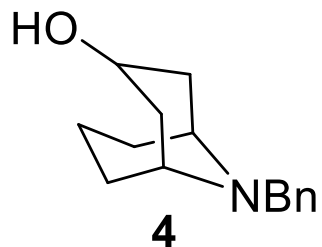
23.4 mg product (19.2 g total)
 18.0 mg standard (dimethyl fumarate, 99.0% purity)
 PROTON CDC13



$$Px = \frac{Ix}{Ical} \times \frac{Ncal}{Nx} \times \frac{Mx}{Mcal} \times \frac{Wcal}{Wx} \times Pcal$$

$$Px = \frac{1.5218}{2.0000} \times \frac{2}{2} \times \frac{231.34 \text{ gmol}^{-1}}{144.13 \text{ gmol}^{-1}} \times \frac{18.0 \text{ mg}}{23.4 \text{ mg}} \times 0.990 = 93.0\%$$

$$Wpdt = Px \times Wx_{crude} = 0.930 \times 19.2 \text{ g} = 17.9 \text{ g}$$



F2 - Acquisition Parameters
 Date_ 20210626
 Time 16.13 h
 INSTRUM spect
 PROBHD Z148658_0003 (
 PULPROG zg30
 TD 65536
 SOLVENT CDC13
 NS 32
 DS 2
 SWH 12019.230 Hz
 FIDRES 0.366798 Hz
 AQ 2.7262976 sec
 RG 78.64
 DW 41.600 usec
 DE 6.50 usec
 TE 296.3 K
 D1 4.00000000 sec
 TD0 1
 SFO1 600.0087050 MHz
 NUC1 1H
 P1 15.50 usec
 PLW1 13.23200035 W

F2 - Processing parameters
 SI 65536
 SF 600.0050000 MHz
 WDW EM
 SSB 0
 LB 0.30 Hz
 GB 0
 PC 1.00